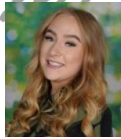


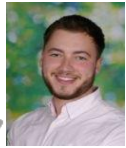


Curious, Creative, Confident Year 5

Meet the Team



5M Miss Waugh class5M@mpsplymouth.net



5P Mr St John class5P@mpsplymouth.net

5S Mrs Pascoe class5S@mpsplymouth.net



Mrs Wadge & Mrs Willis



Learning

Our Curriculum is centred around engaging topics each term. Here's what we've got to look forward to...

Autumn: **Anglo Saxons and Vikings** & **Energy**- How do we power the world? **Sustainable World** - Does it matter where we live?

Spring: **The Ancient Greeks** & **Earthquakes**: How do they change the world?

Summer: **Plymouth –The Tudors** & **UK Region** - Why is Dartmoor a National Park?

Please see the MPS Website for full details.

The School Day

- 8:35 Arrive at School
- 10:20-10:35 Break Time
- 12:15 – 13:15 Lunch Time
- 15:15 End of School Day

PE Days

Tuesday (Indoor)

Thursday (Outdoor)

Children will need to wear their PE Kit to school on these days.

Home Learning

- **Reading:** Please continue to read with your child at home. We recommend your child reads for at least 15 minutes three times a week. Thank you for your support with this, it makes a huge difference to your child's learning and progress. 😊
- **Spelling** Weekly spellings will be set on a **Tuesday** this is also when our fun WOW Write will take place. We recommend your child practises their spellings for at least 15 minutes 3 times every week. A spelling sheet will be sent home each week and these words can also be practised using the **Spelling Shed** website. The spelling list for the week will be assigned to your child and they can play fun games to learn their words.
- **Maths** Fantastic online resource NUMBOTS helps pupils to build fluency of key number facts and supports our learning in school. Children can also use TT Rock Stars to practise their times tables.
- **Logins for Spelling Shed, Numbots and TT Rockstars will be sent home in September.**

If you have any questions or queries, you can speak to a member of the Year 5 team, on the door, at the beginning and end of the school day. Alternatively, you can contact your child's teacher using the class email address. We will get back to you as soon as we can. Thank you!

In regard to attendance, absence, change to end of day pick-ups etc please contact the school office on 216160 or by email admin@mpsplymouth.net